

Report of: Head of Stronger Communities

Report to: Inner East Community Committee- Burmantofts &
Richmond Hill, Gipton & Harehills and Killingbeck &
Seacroft

Report author: Ruth Tiernan, Localities Officer, Tel 0113 5351085

Date: 10th December 2020 **For consideration**

Inner East Community Committee - Update Report

Purpose of report

1. To bring to members' attention an update of the work which the Communities Team is engaged in, based on priorities identified by the Community Committee. It also provides opportunities for further questioning, or to request a more detailed report on a particular issue.
2. This report provides regular updates on some of the key activities between Community Committee meetings and functions delegated to Community Committees, Community Champions roles, community engagement, partnership and locality working.

Main issues

Updates by theme:

Children and Young People: Councillor Salma Arif

Children and Young Peoples Sub Group

3. The Inner East Children and Young Peoples sub group took place on November 25th via Skype and was chaired by Cllr Arif. It was the first meeting of the sub group to include a range partners from across Leeds City Council service areas. Updates were given from Youth Services, Safer Leeds and the Inner East clusters. A discussion also took place around planning for this year's Youth

Summit which will now take place virtually. The sub group will continue to meet with this structure, with the next meeting due to take place in the new year.

Nowells Youth and Community Extension

4. Work is progressing to re-open Nowell Mount Children's Centre. Just over £250,000 has been invested in the centre, creating a substantial extension which will host a range of youth and community activities. The project has been delayed due to the impact of the pandemic, but the extension is now complete and ready to be furnished using wellbeing funding allocated by local ward councillors. It is anticipated that activities will begin in January, albeit with restricted numbers due to Covid-19 health and safety requirements.
5. The facility will provide a safe base for local young people to have fun and take part in youth development opportunities supported by CATCH, Youth Service and other youth providers. The new hall will also provide a much needed local venue to host activities organised by the Nowells Community Group and other local organisations, together with the Children's Centre activities (which target families with young children).

CATCH Youth Engagement

6. CATCH and Leeds City Council are working in partnership to deliver specific engagement and interventions to young people who may be at risk of engaging in crime, anti-social behaviour and youth violence.
7. CATCH have recruited a part-time temporary member of staff to take on the role of Youth Engagement Leader until March 2021. The overall aim is to divert young people away from offending/re-offending, negative peer groups/behaviour and provide positive activities for them to engage in. The Youth Engagement Leader has begun to conduct home/school visits and offer one to one mentoring. They are also conducting outreach work, engaging with parents/carers and delivering workshops with the wider CATCH team. They will have a particular focus on engagement with young people from the Eastern European communities over the coming months.
8. Working with local community safety partners and agencies, CATCH and Leeds City Council are open to receiving referrals to direct the workers outreach to meet local need. A number of referrals have been successfully dealt with so far, with the initial focus being around bonfire night and preventing firework related disorder.

Environment and Community Safety: Councillor Denise Ragan

Environment and Community Safety Sub Group

9. The Environment and Community Safety Sub Group meeting took place on the 19th on November via Skype and was chaired by Cllr Ragan with members and council officers in attendance. Updates were given on local issues around waste, housing, parks and countryside and LASBT.

Cleaner Neighbourhoods Team

10. Below are the current figures from the Cleaner Neighbourhoods Team (CNT). The range for the information is from the September 2019 – November 2019 and then for September 2020- November 2020 and it provides a comparative picture of some of the key areas for reporting and referrals that were received by CNT since last year.

DESCRIPTION	TEAM	From	To	<>	BURRIC	GIPHA	KILSE		DESRIPTION	TEAM	From	To	BURRI	GIPHA	KILSE
Fly Tip	EIE	01/09/2019	19/11/2019	2	1001	2130	419		Fly Tip	EIE	01/09/2020	19/11/2020	272	417	111
Refuse Collection Related Waste Removal	EIE	01/09/2019	19/11/2019		180	602	4		Bulky Collection	EIE	01/09/2020	19/11/2020	84	71	114
Scheduled Bulky Collection	EIE	01/09/2019	19/11/2019		67	72	74		Waste in Gardens	EIE	01/09/2020	19/11/2020	185	67	11
Waste in Gardens	EIE	01/09/2019	19/11/2019		46	60	12		Flytipping	EIE	01/09/2020	19/11/2020	34	53	18
Flytipping	EIE	01/09/2019	19/11/2019	2	22	72	8		Refuse Collection Related Waste Removal	EIE	01/09/2020	19/11/2020	10	72	9
Bin not Returned	EIE	01/09/2019	19/11/2019		32	60	3		Housing Void Garden	EIE	01/09/2020	19/11/2020	21	19	33
Housing Void Garden	EIE	01/09/2019	19/11/2019		18	2	47		Litter Complaint	EIE	01/09/2020	19/11/2020	10	26	13
Litter Complaint	EIE	01/09/2019	19/11/2019		10	12	30		Bin not Returned	EIE	01/09/2020	19/11/2020	5	35	3
Overgrown Vegetation	EIE	01/09/2019	19/11/2019		24	5	9		Overgrown Vegetation	EIE	01/09/2020	19/11/2020	24	8	4
Commercial Premises									Abandoned Vehicle	EIE	01/09/2020	19/11/2020	12	12	4
Duty of Care Inspect	EIE	01/09/2019	19/11/2019		4	28									

11. The Cleaner Neighbourhoods Team has faced a number of challenges since the pandemic hit. They have continued to work throughout but with a much reduced resource, particularly earlier in the year where they were only able to offer litter bin emptying and fly tipping removal and other issues deemed to be a public health risk. CNT were also unable to do much enforcement work during the initial lockdown as lots of skip and waste removal companies were closed along with Household Waste Recycling Centres.
12. As lockdown measures eased, CNT were able to update risk assessments for office staff and front line workers and bring more services back. From the 1st August they have worked to go back to more area based work and zonal

working in Harehills and Burnantofts and Richmond Hill as was the case prior to Covid-19.

13. Having recently gone back into another nationwide lockdown, CNT have managed to keep more services running due to the safety measures they now have in place. They are still running approx. 20% down on staff due to Covid-19 related issues.
14. Prior to lockdown, CNT launched the fly tipping campaign in Harehills and Seacroft but Covid-19 brought it to a standstill. CNT continue to investigate each fly tipping incident and where evidence is found, continue to take enforcement.

Public Space Protection Orders (PSPO)

15. Public Space Protection Order (PSPO's) have been renewed in parts of Burmantofts & Richmond Hill and Gipton & Harehills wards. It has been decided not to renew the PSPO in part of Killingbeck & Seacroft ward. These decisions were taken by Safer Leeds Executive.
16. A new PSPO has been put in place for the hospital grounds at St. James's Hospital. The police and LASBT continues to work with St. James' Hospital and Leeds Teaching Hospital Trust on issues of anti-social behaviour in and around the premises. There are currently ten injunctions in place and more in the pipeline.
17. The PSPO in Harehills is proving less effective than LASBT and partners had hoped. This is due in the main to the sheer volume of people engaging in street drinking across Harehills Lane, Harehills Road and adjacent streets and a readily available supply of cheap alcohol so even when they are challenged and the alcohol confiscated they simply replace it from the many shops within easy reach. In order to try and deal more robustly with this issue partners are working to target persistent offenders whose anti-social behaviour is impacting on the wider community when they are present on the street. Partnership work is also taking place with Forward Leeds for anyone wishing to seek help with addiction issues linked to alcohol and other substances.

Leeds Anti-Social Behaviour (LASBT)

18. The Leeds Anti-Social Behaviour Team continues to operate under Covid-19 restrictions which means working from home where possible, however they can access, through a booking system, a limited number of desks at Deacon House for urgent operational issues such as printing, preparing legal files and postage.

Officers are currently advised not to visit people in their homes unless this is absolutely necessary in order to progress a case that is having a serious effect on someone's mental health and wellbeing. Where this is the case a risk assessment must be completed and authorised by a manager and then full PPE must be worn.

19. In the six months to the end of September demand on the LASBT service saw a 35% increase with caseloads in the east team reaching their highest since LASBT started in 2011. Inner East currently has 109 active cases.
20. LASBT have obtained a Premises Closure Order in North Seacroft against an individual who was persistently disturbing his neighbours with extremely loud music. After being issued with a Section 80 noise abatement notice the behaviour continued so LASBT obtained a warrant to gain entry and seize all noise making equipment from his property. Within days he had replaced the equipment and continued his anti-social behaviour, we obtained a further warrant and again seized all his equipment. After further issues including his arrest for public order issues LASBT applied for and obtained a Premises Closure Order granted by Leeds Magistrates Court, which meant he had to leave for a period of three months, his family subsequently removed all his belongings and his landlady is now seeking possession of her property through the courts.
21. LASBT officers are currently working alongside Police and Housing colleagues to deal with the cuckooing of vulnerable residents in the Lincoln Green and Ebor Gardens area, linked to drug supply and gangs.
22. Emerging issues are the stoning/bricking of vehicles, current key locations are York Road (Killingbeck/Seacroft Hospital area) and South Parkway (Black Shops) junction with Kentmere Avenue where recently a number of buses have been attacked with stones and bricks.

Neighbourhood Policing Update

Street Drinking

23. After declining steadily over a period of time and almost entirely ceasing during the first lockdown, street drinking has increased significantly within the Harehills area. Multi-agency working group established and actions have included:
 - Days of Action with staff allocated exclusively to enforcing the PSPO focused on key areas.
 - Third Party outreach from Touchstone funded by council partners
 - Working together with LASBT, Injunctions issued against two particularly problematic individuals. One individual has ceased attending the area entirely and a second has been arrested and placed before the court on two

occasions already. Further individuals are likely to be targeted in this way as it appears effective.

- Ongoing discussion with Licensing around providing education to local off-licenses and if required enforcement
- New Off-Licence application successfully opposed on Seaforth Place

24. The situation does seem to have improved, albeit this is still a significant local problem which all agencies continue to work hard on.

Organised Crime and Drug Supply

25. The supply of cannabis continues to be a local problem particularly in the Harehills area which officers have been addressing over a long time period. Five individuals have recently been charged with drug supply and remanded to prison awaiting trial.

26. Separately, neighbourhood officers stop, searched and seized over £30,000 from three individuals who have been charged and imprisoned awaiting trial.

27. Officers have executed three search warrants in the past month targeting drug supply and money laundering, seizing thousands of pounds of value in cash, cannabis and other controlled drugs. Individuals arrested from those locations remain under investigation.

28. Working with partners, a Leeds Watch camera has been installed on Harehills Road near the junction with Ashton Terrace which has been used for drug supply over many years. This has effectively halted supply at location although it has partly displaced to other locations.

29. Three children have been referred through for support as a result of concerns officers had that they were being criminally exploited into drug supply. Two of those individuals have been successfully diverted away from crime.

Bonfire Night

30. From a neighbourhood policing perspective the bonfire night period was considered a success for the Harehills area with positive partnership work happening across the period. It was not completely without anti-social behaviour but was by far the least disruptive evening officers have observed, some of which have covered Harehills for more than a decade.

Knife Crime

31. Following a recent spate of knife related crime in the Burmantofts and Richmond Hill area, there have been a significant increase of resources. Funding was obtained to tackle violent crime which has led to heightened

patrols in the area, and significant work within schools educating around the effects and risks of carrying knives.

32. The police have worked with Operation Jemlock, carrying out targeted disruption on individuals linked to the offences and over recent months two weapons sweeps have taken place, recovering a number of knives that had been hidden.

Kingsdale Court, Gilstead and Farnley House

33. The complex of flats in Seacroft was historically owned and or managed by organisations with criminal links. This led to the area generating a massive amount of ASB, serious acquisitive crime and alleged drug dealing. The flats were often let to challenging individuals as well as vulnerable ones without any safeguarding/location analysis. A huge amount of work has taken place with local partners and the Crime Prevention Officer from the neighbourhood policing team.
34. The local Crime Prevention Officer has produced a detailed and impactful video which highlights the challenging and significantly unsafe surroundings people were living in. This was a catalyst for excellent partnership intervention which led to the two blocks of real concern being closed for three months initially via Leeds Magistrates court.
35. Following the expiry of the court closure orders in August 2020, West Yorkshire Police were able to submit a further impact statement to successfully extend the closure of one block. Since then they have seen a drop in calls for service/crime and ASB at the site to the point and are rarely seeing any necessity for police involvement at this time.

Health, Wellbeing & Adult Social Care: Councillor David Jenkins and Councillor Asghar Khan

Touchstone Loves Food

36. Touchstone Loves Food engages people through food and works with them to identify any other support they need to build their resilience. This initiative was set up overnight as the first national lockdown started in March 2020 and has now developed into a service with a dedicated team.
37. Key outcomes from the scheme:

- 160,000 meals delivered citywide
- 82% in priority neighbourhoods

- 51% of people who access Touchstone Loves Food are BAME
- Over 2000 calls to residents
- 150 hours of support calls
- Increase in safeguarding cases dealt with by the tea
- Over 40 volunteers, many from Inner East Leeds, one of which is now employed with Touchstone.

38. The Service provides food and other essential items for personal hygiene. Food includes options for all dietary requirement and cultural preferences.

Touchstone have also distributed information in food bags to support partners connect with residents.

39. Touchstone have now secure Big Lottery funding of £81,000 and hope to secure a further six figure donation from Barclays Bank to continue Touchstone Loves Food until November 2021.

Inner East Public Health

Covid- 19 update

Testing

40. Within Leeds there is a 'go to' page which provides details for all the testing opportunities available across the city. This site is regularly updated with details including the locations and timings of the Mobile Testing Units.

<https://www.leedsccg.nhs.uk/health/coronavirus/#where-can-i-go-for-testing>.

41. In addition to this there is a local response to testing with a pop up facility that is moved to meet demand. The centre has been based at Bilal Centre in Harehills, Mandela Centre in Chapeltown and is currently operating out of Little London Community Centre.

42. There are now permanent Local Testing Sites now at the Mandela Centre, Fearnville leisure centre and Bridge St Community Church. There continues to be an emphasis on increasing accessing to testing. Testing can be booked via 119 or www.nhs.uk/coronavirus

Community led door knocking

43. The Public Health locality specialists were involved in the city-wide response to increasing rates across the district and were instrumental in establishing the pop-up Covid-19 testing facility and contributed to the location of local offer

testing sites in the Inner East area. A team of door knockers has been linked to the pop up with the key role of providing information to those living in the area about the facility and encouraging testing where needed. Coordination of this outreach response has been led by the two specialists for the area, working with various geographically based partners including the third sector. Door knocking has taken place in a high percentage of the Inner East area and this will continue as new Covid-19 messages and services are made available.

Food mapping

44. A food-provision mapping exercise was undertaken during the summer, initiated by the locality specialists when it became apparent that data collected city wide level on food parcel provision was providing incomplete data on food need. This mapping of food provision revealed the tremendous efforts of our voluntary sector partners who were procuring food from across the district and engaging businesses for food donations. This mapping exercise informed the city wide food response and was gratefully received by the teams involved.
45. There continues to be work ongoing to map the local foodbanks to support the ongoing issue of food insecurity and a new heat map and statistics have recently been released by the Leeds Food Aid Network.

Covid 19 grants

46. Public Health has commissioned Forum Central (leading a consortia that includes Voluntary Action Leeds, Healthwatch and Leeds Community Healthcare) to build capacity within the third and community sector. This will enable asset based approaches to prevent and manage outbreaks in local communities and communities of interest in line with the Leeds Covid-19 Outbreak Plan. This includes a range of small grants to work with specific communities of interest and localities in response to the emerging situation.
47. The Council has been working with third sector and community partners across the city to use their expertise and networks to develop and tailor approaches to communication, prevention work, outbreak management and provide support to people (including communities of interest) in a meaningful way. These activities have also enabled effective local two-way dialogue to build on this work and support active involvement from these communities to shape solutions that best meet their needs.
48. Leeds City Council's aim is to ensure that its Covid-19 response meets the needs of all communities, communities of interest and those who are at greater

risk, or more vulnerable, to Covid-19. Vulnerability includes those who are clinically vulnerable, those who are socially vulnerable and those communities who are marginalised or under served.

Covid Messages for priority groups

49. A working group has been established to ensure that key messages are made accessible to local communities to increase awareness. The group has been pivotal in providing a range of locally developed resources in a wide range of formats and languages. The information can be found on the Leeds City Council YouTube website:

<https://www.youtube.com/watch?v=P9onpmBI6QY&list=PLggQFjpTLgplq0r7-nFO9mT6j8Yk2vKBt>

Better Together contract

50. The Better Together contract is currently in procurement process and is undergoing service review. Focus groups with service users have been conducted with help from partners and surveys have been undertaken. The service review is due to be completed by the end of 2020 and this will inform future commissioning decisions.
51. The Better Together providers have continued delivering food parcels, making welfare calls and offering emotional support to those people in need. Some groups had moved from an online platform to physical delivery with success; a lot of groups were offering a mixed delivery method of online and physical for those service users who had lost confidence in venturing outside and those who were apprehensive.
52. In addition to this the team recognised the need to include 'door stop' visits to those people not responding to digital invitations to connect and those known to be digitally excluded. This offer has been very well received. The team have also been pivotal in the Public Health outreach response and have door distributed leaflets with safety messages to every household in the Inner East area as well as door knocking to invite any questions residents may have on staying safe, regulations and in cases just having a welcome chat. The response from the residents was overwhelming positive with many residents thanking them for their time and caring response.

Your Space contract

53. During quarter two monitoring period (July-September), Your Space began the transition of moving groups from digital to face to face. Measured outcomes of the project continue to show a positive trend. 92% reporting improved mental health outcomes; 69% reporting a positive social experience; 77% reporting feeling more connected; 88% having increased their knowledge on services and resources and 87% taking action to improve their mental wellbeing.
54. Your Space delivered 31 training sessions this quarter covering food and mood, sleep, exercise and meditation. 96% of attendees reported having learnt something new. Your Space continue to have a strong social media presence which has grown considerably during the first lockdown into the summer. There are now over 1700 followers of Your Space accessing their YouTube channel, Facebook, Instagram and Twitter accounts.

Community Engagement: Social Media and Newsletter

55. **Appendix 1**, provides information on posts and details recent social media activity for Inner East Community Committee Facebook page.

The Communities Team

Priority Neighbourhoods

Boggart Hill

Youth Activity

56. LS14 Trust and Fall into Place delivered a Healthy Holidays scheme over October half term ensuring food and pumpkins were delivered to families needing support during the holidays. This has been an important check in opportunity with some vulnerable families whilst physical activities have been unable to take place.
57. The second lockdown has meant that the locally planned activities have not been able to go ahead in their originally designed format. However Fall into Place have now confirmed a new online Youth Theatre project starting in November for 5-11 year olds and 11-18 year olds. The virtual project will be an opportunity for children and young people to interact, play games and work on creative challenges.
58. Seacroft Folk Can is a new project beginning in January 2021 for adults in Seacroft looking to gain confidence, build resilience skills and emotional

wellbeing. This virtual skills workshop project is being run by Fall into Place and places are available.

59. Youth Service have been delivering a detached Youth Work programme engaging young people to make better choices as well as promote their wellbeing by providing social, moral or emotional support as and when required. For the October to December period support has been concentrated in Rein Park, Denis Healey, Tesco's, York Road and Crossgates.
60. The main thing young people have been vocal about is that they are tired of Covid-19 and whilst many said they hated school, since young people returned to school in September Youth Service have noticed is less young people around and less anti-social behaviour. It may be that school has provided young people structure which they may not have wanted, but needed.
61. Work continues around Boggart Hill shops, building relationships with businesses to prevent issues arising. They are also building links with onsite security at Tesco's to encourage young people to move on especially during lock down. Practitioners have also prioritised working around the black shops and York Road to build relationships with young people who may be causing problems in the area.
62. Youth Service are working with Pathways to ensure young people who are NEET have opportunities to speak to someone if they need help accessing training or information re going to school/ college or finding a job. We have also done a number of youth work evaluations called Youth Stars to track, monitor and put action plans in place where possible to support the development of young people.
63. In the last week before Christmas Youth Services will provide a festive pack with chocolates to thank young people for their continued support and understanding over what has been a difficult year as well as provide packs offering actives and mental health support over the Christmas holidays.
64. Youth Activity Fund money was awarded to hold some T-shirt design sessions around themed topics e.g. racism, gender equality and tolerance and knife crime in early 2021. Challenging behaviour amongst a small group of children and young people has led to a partnership meeting being arranged by the Communities Team with relevant Council services and local third sector partners meeting in November to look at an ongoing strategy of support and enforcement to address the presenting issues around Rein Park and Boggart Hill.

Covid-19 response

65. LS14 Trust continue their role as the lead organisation in the Covid-19 response for Killingbeck and Seacroft ward and have seen an increase in requests for assistance over recent weeks but are working collectively with partners to respond to community needs as the ward Volunteer Hub. In addition to looking after people who are referred through the Council helpline, the group are also putting out their own support leaflet and phone number for local people in the ward to contact them directly for assistance.

Rein Park and The Gate

66. Future plans for engagement and consultation to develop Rein Park and The Gate site have had to be paused due to the recent lockdown and partners need to prioritise the local Covid-19 response. However work is still taking place in the background to consider best options and take advantage of any emerging funding opportunities that have arisen to expand the project in the park.

Cliftons and Nowells

Nowells Community Group

67. The Communities Team and the ABCD Community Builder continue to work closely with the Nowells Community Group, which was formed last year. They have continued to meet and grow despite not being able to get together in person. The group, supported Active Leeds, were able to deliver a successful Explorer event on Nowell Mount Park during October half term. They have also supported some local children to form a litter picking group. The group have their own Facebook page and are continuing to attract new volunteers who are willing to offer their skills, talents and time to improve their neighbourhood.

Clifton and Nowells Core Team

68. The Communities Team have hosted themed discussions with partners from the Clifton and Nowells Core Team. The aim of these meetings has been to ensure the neighbourhood improvement work remains joined up and to give partners an opportunity to work towards a refreshed action plan for 2021.

Football Foundation / Sport England Places Programme

69. A feasibility report has been completed for the sites in scope for capital investment from the Football Foundation / Sports England Places Programme. These sites include the 5 a side pitch at Bridge Community Church and the MUGA at Nowell Mount. Active Leeds will now start conversations with the funders about an achievable funding model. Active Leeds have also secured some resource to prepare a community engagement plan that will be used to open meaningful dialogue and coproduction conversations with residents about the project.
70. Active Leeds have brought together a consortium including Leeds Utd, Public Health and Yorkshire Sport Foundation to bid to the newly launched 'Active Through Football Fund' which will fund up to £1 million of revenue to use football as a tool to tackle physical inactivity.

Learning Partnerships

71. Learning Partnerships work across East Leeds and play a significant role in supporting the work within the Clifton and Nowells. Like most organisations their services and funding have been significantly impacted by the pandemic, but despite this they have adapted quickly and continue to provide a number of vital services supporting people in the local community. They currently offer a number of employment support programs offering targeted assistance to help people secure employment.
72. The Learning Partnerships money advice service has been busy helping people with income maximisation, budgeting and debt problems. Learning Partnerships successfully bid for some short term lottery funding which they have used to create a Covid-19 safe classroom at their base on Hudson Road, whilst they have managed to deliver adult learning courses online, for ESOL classes this has proved to be ineffective, being able to have students back in a face to face environment is a real breakthrough.
73. Locally they also employ an ABCD Community Builder who has been out and about engaging with local residents, some of which have joined Nowells Community Group and have plans to deliver activities in the neighbourhood. They also run the Two Way Street project which supports residents to deliver small scale environmental improvements, through lockdown this group have built and maintained a community garden in the grounds of Nowell Mount Community Centre.

Lincoln Green

Lincoln Green, Mabgate & Burmantofts Neighbourhood Plan

74. East Street Arts hosted a stakeholder meeting on the 22nd October to update on their proposals and aspirations for the Neighbourhood Plan that will encompass Lincoln Green, Mabgate and part of Burmantofts. Their initial work has focussed on community engagement to raise awareness of Neighbourhood Planning and to recruit people to the neighbourhood forum that will ultimately develop the plan. They are hosting a virtual Q&A forum on 15th December, details of this and their other engagement activities can be found on their website:

<https://www.eaststreetarts.org.uk/2020/07/03/whats-coming-up-neighbourhood-plan/>

Mini Holland Highways Scheme

75. Work has begun in Lincoln Green on the on a Highways scheme which will improve cycling, pedestrian and parking provision in and though the neighbourhood. This major capital scheme has been split into three phases. Phase one has already begun and will widen the footpath along Lincoln Green Road and upgrade the pedestrian crossing, works will also take place within the estate to create designated parking bays on Lindsey Road and Granville Road and footpath resurfacing works in a number of locations throughout Lincoln Green.
76. Phase two will provide a dedicated two way cycle lane from Cherry Row to the hospital, provide an enhanced streetscape with upgraded footway materials and the provision of trees and planting. This will give the area an uplift and provide a safe and direct route for both pedestrians and cyclists. Traffic signals are proposed for the junction of Lincoln Green Road / Cherry Row which will help pedestrians and cyclist crossing this busy road. Highways are currently working on the detailed designs for phase two which will incorporate some “playful elements” which will augment the scheme and be beneficial for children in the area, this work is continuing and the team have had a productive session with pupils from Shakespeare Primary school on what features they would like to see provided. Phase three will run from Mabgate up to the Regent Street Flyover with detailed design work to take place early next year.

Your Voice Leeds

77. Housing Leeds have launched a new online engagement platform providing a new route for tenants and residents to get involved in conversations with The Council about their neighbourhood. The web based platform is being trailed in Burmantofts and Lincoln Green initially and if successful will be used to support consultation and engagement work across the City. Residents in the target

areas have been made aware of the new website and are asked to sign up so they can participate in a number of live consultations

<https://yourvoice.leeds.gov.uk>

Target Wards

Burmantofts and Richmond Hill

Neighbourhood Improvement Partnership

78. The Burmantofts and Richmond Hill Neighbourhood Improvement Partnership reconvened on 18th November. The virtual meeting was well attended and gave partners the opportunity to re-connect in one “room”. Councillors expressed their gratitude to all the organisations and services that have provided vital support to the community throughout the pandemic.

79. Updates were provided from the Communities Team on the impacts for Covid-19, an emerging Covid-19 recovery plan and the structures that are in place to support locality working in the ward. This was followed by an update from Voluntary Action Leeds and Leeds Mencap on the on the role the Community Care Volunteer hub has played in Burmantofts and Richmond Hill. The main substance of the meeting was built around updates from individual partners outlining their current work, successes and challenges looking forward.

Youth Partnership

80. The Burmantofts and Richmond Hill youth partnership continues to bring partners together from third sector youth provisions, Leeds Youth Service, schools and other relevant partners to coordinate a ward wide youth offer. This is still largely a detached youth work model, but partners are eager to establish some centre based provision as soon as the Covid-19 restrictions allow.

81. The Youth Partnership brought partners together to coordinate the holiday hunger provision that was in place during October half term. Current priorities include work to understand digital exclusion faced by young people in the ward and develop a response which ensures no young people are disadvantaged due to digital access barriers.

East End Park Bike Event

82. On 9th October Active Leeds and The Communities Team brought partners together to deliver a social distanced cycling event in East End Park. Leeds Bike

Mill offered free bike checks, adjustments and basic repairs, whilst British Cycling set up an obstacle course with ramps to challenge the riders.



Free bike checks and basic repairs!

The BIG BIKE Revival

Week beginning 26th October 2020
 Tuesday: 11am - 3:30pm @ The Old Fire Station, Gipton
 Thursday: 11am - 3pm @ The Compton Centre, Harehills
 Saturday: 10am - 2pm @ Leeds Bike Mill, Mabgate Green

Leeds Bike Mill, supported by Cycling UK, are offering free bike safety checks & basic repairs.

Booking essential
 Please visit leedsbikemill.org/dr-bike or call/text Amanda on 07308 377901 to book a slot with one of our qualified mechanics.



BigBikeRevival.org.uk
 #BigBikeRevival

we are cycling
 Department for Transport



83. The event was well attended although numbers had to be strictly limited to ensure it was Covid-19 safe. This event forms part of a wider ongoing piece of work being led by Active Leeds to promote and develop cycling in East Leeds.

Community Care Volunteer hub

84. The informal partnership led by Leeds Mencap that came together in March to coordinate the local response to Covid-19 continues to work effectively. There has been a slight increase in referrals to the hub coming via the Councils' helpline in recent weeks, but numbers remain low compared to the height of the first national lockdown in April / May. However the referral numbers only tell part of the story, the hub partners are currently providing ongoing support to a significant number of residents each week with food, welfare calls and signposting support. Partners are currently working together to develop a coordinated offer to support people through the Christmas period.

Local Care Partnerships – Winter Plan

85. Burmantofts and Richmond Hill ward is split between two Local Care Partnerships, HATCH and York Road LCP. Both LCP's bring together services

from primary care and the third sector to support health and wellbeing initiatives and tackle health inequalities. In October both LCP's held winter planning workshops to ensure a robust local plan is in place to support vulnerable groups through the winter. The plans are wide ranging and include work streams around flu vaccination, fuel poverty, mental health, eating well and staying connected.

Gipton and Harehills

Gipton and Harehills Community Cares Volunteer Hub Update

86. The consortium of Gipton-based organisations led by Space2 have now taken on the administration of the portal and the coordination of the Community Cares Volunteers across the whole of the ward up until December 2020, with CATCH continuing with their food bus and the production of weekly food hampers for the community. This partnership effort will better enable the strengths of each organisation to be utilised and provide greater capacity for the day to day management of volunteers.
87. Since the start of the recent lockdown, new referrals have increased slightly but the hubs are managing this well. Despite the number of referrals being manageable, the hubs provide significant levels of ongoing support to a number of vulnerable individuals. Other organisations within the ward such as St Aiden's Church Food Share and Neruka's Soup kitchen continue to have high referrals numbers. The Communities Team are supporting them to access further funding, volunteers, resources and language support. The Migrant Access Project has been a huge source of support to these organisations throughout the pandemic, by engaging local Migrant Community Networkers to support with sharing key messages at these local food hubs and food banks.

Bonfire disorder prevention

88. A partnership of services and organisations have been working together since July this year to deliver preventative work in the lead up to bonfire night in Harehills where there is significant firework related disorder. The group are made up of officers from West Yorkshire Police, West Yorkshire Fire and Rescue Service, Leeds Anti-Social Behaviour Team, Cleaner Neighbourhoods, Youth Service and is coordinated by the Senior Localities Officer for Gipton and Harehills from the Communities Team. There is also a sub-group made up of community organisations working with children and young people. Huge amounts of work went into this years' planning with learning taken from previous years, as well as new ideas that have been very successful.

Key successes included:

- A virtual community cell, where residents fed back incidents in real time to the Senior Localities Officer who then shared with officers from Youth Service, CATCH and Police who were out on the evening and were able to engage with young people within minutes.
- Greater police presence on the night- This meant that incidents of firework related disorder could be dealt with more quickly and there were far fewer incidents compared to previous years.
- Youth Engagement on 4th and 5th – This greater focus on early engagement with young people was the greatest success this year. Young people were engaged with positively during both the daytime and evening by Youth Workers and Safer Schools Officers before potentially engaging in disorder. Young people were given safety advice and advised of the consequences of engaging in such behaviour. They were also escorted home or offered a place of safety, so that they could choose to not engage in dangerous behaviours despite potential peer pressures.

89. This greatly reduced the number of young people engaging in disorder this year. Wellbeing funds were absolutely essential to support the extra work undertaken by the Youth Service and CATCH to enable this to happen.

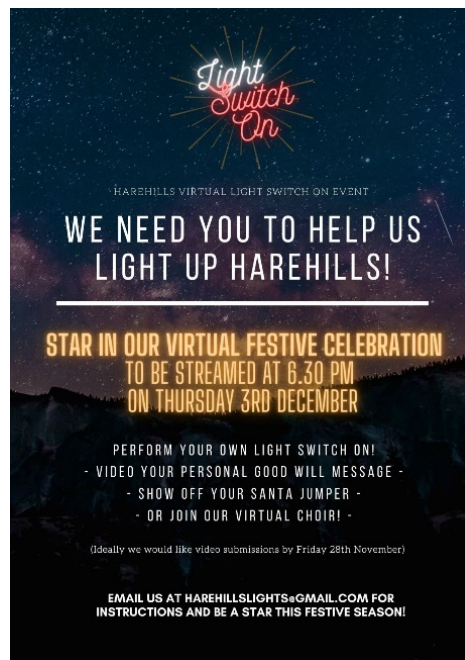
Festive Lights

90. This year will see the first virtual Festive Light Switch Ons in both Gipton and in Harehills. Funded by Gipton and Harehills Councillors using Wellbeing funds, these two events can be enjoyed by the comfort of residents' own homes in December.

91. Led by local residents, the Harehills event will be made up of pre-recorded videos of the motifs and Christmas tree lights being switched on, as well as goodwill messages, festive music and much more from local residents and organisations. It will be streamed on Thursday 3rd December at 6.30pm.

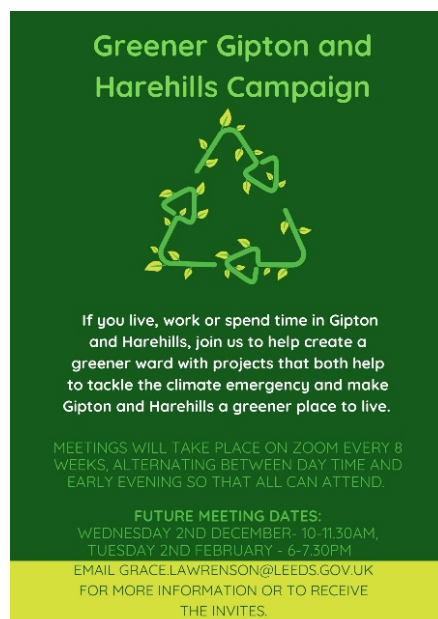
92. Led by the Gipton Neighbourhood Improvement Partnership, the Gipton events have also been adapted to make them Covid-19 safe. Local artists and partners have created 500 'Bags of Joy' for local residents to enjoy. They contain gifts donated from local businesses as well as festive crafts and ideas for the whole family to enjoy. They can be booked and then collected from 7th -18th December from the Old Fire Station.

93. In collaboration with East Leeds FM, we will also be live streaming the 'switch on' of Gipton's three Christmas tree lights on Friday 4th December from 5pm as part of their 'Staying Close' show, celebrating East Leeds during lockdown



Greener Gipton and Harehills Campaign

94. A meeting for the Greener Gipton and Harehills Campaign will take place on Wednesday 2nd December for people who live, work or spend time in the ward and are keen to be part of tackling the climate emergency and making the ward a greener place to live. This meeting is open to residents and partners in the area and this first session will start to set the direction for the campaign.



95. The Gipton Neighbourhood Improvement Partnership met on Wednesday 18th November and focussed on the development of the residents' survey that will go live in the New Year. Working with Housing Leeds, the partnership are looking to utilise Engagement HQ software to deliver the online version of the survey as well as paper-based surveys and other options, such as group sessions. The partnership's agenda also included the immediate plans for the festive activities and the branding of the partnership moving forwards.
96. The Harehills Neighbourhood Improvement Partnership met on Thursday 29th November and focussed on the local Covid-19 data and response, the work of the local Community Cares Hub run by CATCH as well as projects and wider discussions on opportunities to respond to the challenges of Covid-19 locally moving forwards, including employment opportunities, financial support and food support.

Licensing

97. On Monday 22nd September, a hearing of the Zuber off licence application was heard by the Licensing Sub-Committee. Passionate objections were submitted by local residents and objections made on the day by the local Neighbourhood Policing Sergeant, Licensing Authority and local Councillor, Cllr Salma Arif. The application was successfully rejected.

Killingbeck and Seacroft

The Denis Healey Centre

98. Improvements are progressing well and the centre is starting to look brighter and more welcoming. Many of the originally proposed improvements have been completed and attention has now moved to finishing touches, such as community art work and a reception area. The improvements are currently sitting well within the budget and any funds left at the end will be used to complete additional finishing touches. The community centre remains closed due to Covid-19 which has provided an opportunity to progress the building improvements with minimal impact to the building users.
99. The community café and gym at the centre are also progressing well. The café counter is nearly finished. The gym is also being developed. The Communities Team are working on securing funding to purchase some additional equipment, and again are using Covid-19 as an opportunity to plan the running of the gym. Two local enthusiastic volunteers are being funded by Yorkshire Sport Foundation to complete a level two gym instructor course which will enable

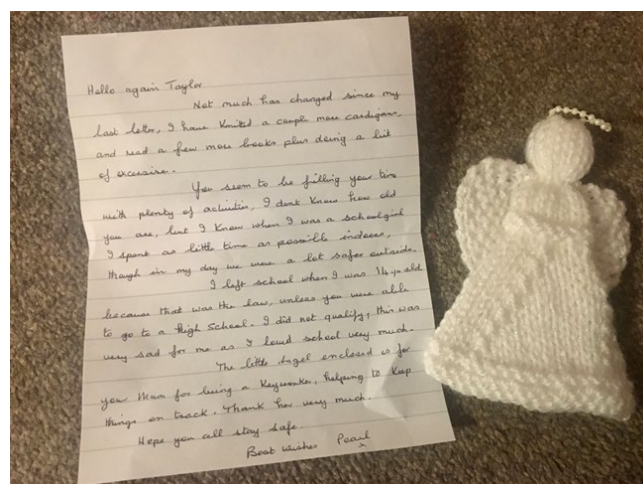
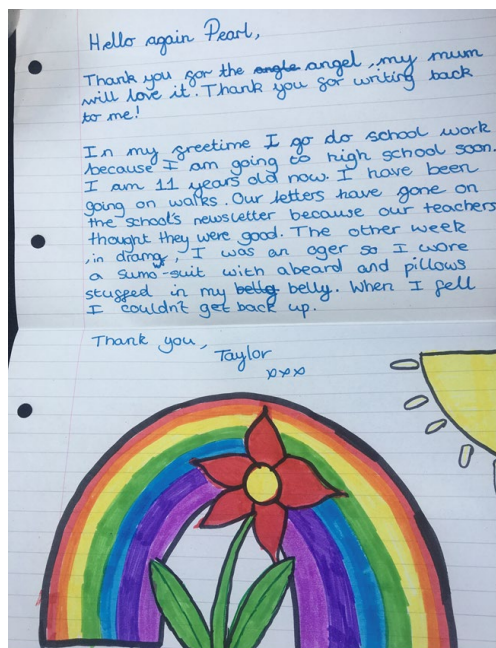
them to support the running of the community gym and engage other local people.

Seacroft Gardens

100. Work has advanced with Seacroft Gardens which is situated next to the Denis Healey Centre. The Communities Team are working on a collaborative project to build a new playground in the area. Previous consultation and more recent consultation has informed the playground plans which have been designed by Groundworks, and Seacroft Community on Top have led consultation on these plans with the local community. Work has started for procurement for the play equipment and playground infrastructure. The team are also working to secure funding to put either a chicane or a-frame at every entrance to Seacroft Gardens to reduce motorbike anti-social behaviour.
101. Third sector partners in Seacroft continue to adapt their provision to the needs of the local community. Provision prior to the recent lockdown included Covid-19 safe Halloween activities, food and activity support over October half term and boot camp at Seacroft Gardens.

Pens to Pals

102. Over summer and the October half term, Fall into Place worked with 150 families for the Seacroft Sociable Folk project in partnership with LS14 Trust and S.C.O.T. They supported the community in a range of ways including sending out food and creative packs and delivering socially distanced sports and activities for the young people to get involved in. One of the projects “pens to pals” was about keeping the community connected at this difficult time through letter writing and came on the back of a project Fall into Place started connecting schools and care homes.
103. When older people in the community had to shield Fall into Place wanted a way to keep them connected without technology. The project involved linking up pen pals with older and younger people in the community. The project improved the wellbeing of both the older and young people involved and saw some unexpected friendships form.



Cross-ward Updates

Harehills and Burmantofts

Bingo Premise Licence

104. A licence was submitted by Cashino Ltd for the former Gilchris bakery site. Again, representations were submitted by many local residents, businesses, agencies and local Councillors against this application. The local Neighbourhood Policing Sergeant, Licensing Authority, Financial Inclusion and local Councillors Cllr Denise Ragan and Cllr Salma Arif spoke against the application at the hearing.

Updates from Key Services

Community Hubs

Covid-19 Response

105. Since the start of the Covid-19 crisis the Community Hubs have worked in partnership with Fare Share and opened a food distribution centre at Logic Park. Leeds City Council staff who could not work from home, volunteered to pack food bags that were delivered by a fleet of Leeds City Council drivers to the vulnerable residents of Leeds. Some of the Community Hubs acted as food distributors including The Compton Centre with two members of staff and managers on site who organised delivery of food bags from the food distribution warehouse.

106. Community Hub staff working from home were allocated to assist on the Covid-19 helpline. The Covid-19 helpline-directives for medication, food requests and support-was put in place for those shielding, vulnerable and no other family member to assist them. Medication and food was delivered by a fleet of Leeds City Council staff. This service was promoted with a campaign that included posters, social media and targeted leaflet drop which was aimed at the most vulnerable of our society.

Job Shops

107. Job Shop staff worked from home and continued to work with existing Job Shop customers with welfare checks. Customers were also able to email jobshops@leeds.gov.uk with their name and a contact number and the Job Shop team would call the customer back and give support over the phone or email with:

- CV guidance
- Reading through and supporting with job applications
- Over the phone interview preparation support
- Supporting with job search
- Other support around looking for work over the phone
- Careers guidance

Safer Sleeping Scheme

108. The Compton Centre Community Hub issued 52 Moses baskets bundles from Feb 2020 to date. Due to the Covid-19 pandemic they have seen an increase of the referrals for the Moses baskets. Most referrals have been received via services who work directly with parents and children in their core role. It is expected there will be an increase in referrals at the end of the year 2020 if there is a higher birth rate because of Covid-19, therefore a funding bid was submitted and The Compton Centre was successful in securing £1,400 from the Inner East Community Committee Wellbeing fund to fund a further 35 Moses baskets.

Healthy Holidays

109. Due to the lockdown the Community Hubs were unable to provide free lunch for the vulnerable children at their sites, however Leeds City Council's Community Hubs and partners delivered a programme of Healthy Holiday provision across the city, focussing on eight of the main Community Hubs in the areas of highest deprivation which were delivered to the homes of the children.

110. The Community Hub offer consisted of a food component, comprising of a weekly food hamper; a “Bag of Creativity”; a set of Lego; four books which can be either read by or read to the young person, allowing them to participate in the Summer Reading Challenge delivered by Leeds Libraries and a certificate and medal upon completion of the Summer Reading Challenge.

Digital offer

111. iPads have been sourced to allow access to the online activities and provision for families who are digitally excluded due to lack of connectivity. The loan of a tablet to digitally-excluded families on the scheme, for a period up to the end of the summer scheme. With the summer scheme ending 4th September 2020, these tablets had their loan periods extended until 2nd November 2020 to supplement and support with the first term of school, with a large number of children returning to the classroom after an extended period of absence due to Covid-19.

Project Development Worker Team

112. The team have been busy responding to any needs or gaps in support within local communities, working alongside Wellbeing Coordinators and as and when a need or gap is identified, the Project Development Workers work to establish a new groups, activities or project that will fill the gap and help provide the support that the patients and the local community’s needs.
113. The second function of the role of the Project Development Worker Team is to recruit, train and support volunteers called “Community Health Champions” to work in their communities with the aim of supporting the delivery of groups, activities and projects that improve the health and wellbeing of their family friends and neighbours. So far the Inner East the team have developed a virtual coffee morning, a virtual patient support group, an intergenerational group, a table tennis group and a vaccines and immunisation project.

Third Sector Partners

114. The Inner East Community Committee would like to thank all third sector organisations working in Inner East for all their hard work during the Covid-19 pandemic. Third sector organisations have continued to deliver vital projects to people living across Inner East Leeds and the Community Committee thank them for their hard work and commitment during this difficult time.

Housing Leeds

Update from the Housing Advisory Panel (HAP)

Inner East

115. The Inner East Housing Advisory Panel has been meeting every eight weeks via a conference call. There are nine members on the panel with one vacancy. The HAP has five friends of members who have a local connection to the area but are not able to vote on any panel bids but can offer valuable local information. All members review the delivery of local housing services and monitor local performance. The HAP is represented by two ward members, Councillors Ronald Grahame and Councillor Kamila Maqsood. The panel are also funded to be able to consider and support a range of environmental and community related projects.

116. Since April 2020 all bids have been Covid-19 related and a new faster process has been devised to help local groups apply for up to £500. The Inner East Housing Advisory Panel are now seeing a slow down on Covid-19 related bids and more of a normal selection of applications.

117. The Panel has supported eight community related projects since September 2020. Funded projects include:

- South Farm Road Bins
- Arts project in High Rise
- Bowling sets
- Street drinkers project
- Xplore kit for Nowell Mount
- Bollards in Lincoln Green
- Trees and Planters
- Raised beds Lincoln green
- Pembrokes Bench
- Meals for East Leeds Rugby Club
- Out of School Provision

118. Below is information highlighting the number of projects submitted and approved by theme and ward:

Budget by HAP themes	Number of projects submitted	Number of projects approved	Amount Committed by Panel	% committed	Other funding contributions
Environment & Housing	8	3	£ 5,905.12	11.82%	£ 32,800.00
Health & Well-being	18	8	£ 8,027.49	16.08%	£ 18,785.00
Community Safety	2	1	£ 2,000.00	4.00%	£ 1,000.00
Employment & Skills	5	2	£ 936.33	1.87%	£ 1,622.66
Inner East Total	33	14	£ 16,868.94	33.78%	£ 54,207.66

Budget by Ward Area	Number of projects submitted	Number of projects approved	Amount Committed by Panel	% committed	Other funding contributions
GiptonandHarehills	15	6	£ 6,803.94	13.62%	£ 25,372.66
BurmantoftsandRichmondH	14	6	£ 7,765.00	15.55%	£ 21,135.00
MultipleIE	1	1	£ 300.00	0.60%	£ 6,700.00
AllIE	3	1	£ 2,000.00	4.00%	£ 1,000.00
Inner East Total	33	14	£ 16,868.94	33.78%	£ 54,207.66

Outer East

119. The Outer East HAP Panel has continued to meet every eight weeks via a conference call due to the current pandemic. There are ten members on the Outer East HAP panel with no vacancies. They also have a friends of member who has a local connection to the area but are unable to vote on any panel bids. The members review the delivery of local housing services and monitor local performance. The HAP is represented by two ward members, Councillor Jenkins and Councillor Drinkwater. Since April 2020 they have also received a number of £500 and under Covid-19 related applications as well as the standard applications.

120. In 2020-21 The Outer East HAP has supported 10 community and four environmental related projects and one Employment & Skills project since April 2020. Funded projects include:

- Queensview Keysafes
- Virtual Father's Day
- Fencing Brooklands Avenue
- Chapel FM Red kite Project
- Wellbeing Food Hampers
- Tribe Youth Group Equipment
- Securing Seacroft Gardens
- TLC Ipad Lending Scheme
- Developing You Support Course
- That Name Woman Zoom Cookery
- CGN PPE Equipment
- Leeds Centre Mission Youth Group
- S.C.O.T Halloween Boxes
- Seacroft Park Picnic Area
- Queensview Seating

121. Below is information highlighting the number of projects submitted and approved by theme and ward:

HAP themes	Number of projects submitted	Number of projects approved	Amount Committed by Panel	% committed
Environment & Housing	13	4	£ 13,320.24	31.81%
Health & Well-being	12	10	£ 13,075.33	31.22%
Community Safety	0	0	£ -	0.00%
Employment & Skills	1	1	£ 3,030.85	7.24%
Outer East Total	26	15	£ 29,426.42	70.27%
Budget by Ward Area	Number of projects submitted	Number of projects approved	Amount Committed by Panel	% committed
KillingbeckandSeacroft	26	15	£ 29,426.42	70.27%
	0	0	£ -	0.00%
	0	0	£ -	0.00%
Outer East Total	26	15	£ 29,426.42	70.27%

Corporate Considerations

Consultation and Engagement

122. The Community Committee has, where applicable, been consulted on information detailed within the report.

Equality and Diversity/Cohesion and Integration

123. All work that the Communities Team are involved in is assessed in relation to Equality, Diversity, Cohesion and Integration. In addition, the Communities Team ensures that the wellbeing process for funding of projects complies with all relevant policies and legislation.

Council Polices and City Priorities

124. Projects that the Communities Team are involved in are assessed to ensure that they are in line with Council and City priorities as set out in the following documents:

1. Vision for Leeds 2011 – 30
2. Best City Plan
3. Health and Wellbeing City Priorities Plan
4. Children and Young People's Plan
5. Safer and Stronger Communities Plan
6. Leeds Inclusive Growth Strategy

Resources and Value for Money

125. Aligning the distribution of community wellbeing funding to local priorities will help to ensure that the maximum benefit can be provided.

Legal Implications, Access to Information and Call In

126. There are no legal implications or access to information issues. This report is not subject to call in.

Risk Management

127. Risk implications and mitigation are considered on all projects and wellbeing applications. Projects are assessed to ensure that applicants are able to deliver the intended benefits.

Conclusions

128. The report provides up to date information on key areas of work for the Community Committee.

Recommendations

129. The Community Committee is asked to note the content of the report and comment as appropriate.

Background documents¹

130. None.

¹ The background documents listed in this section are available for inspection on request for a period of four years following the date of the relevant meeting Accordingly this list does not include documents containing exempt or confidential information, or any published works Requests to inspect any background documents should be submitted to the report author.